

WARRANTY CARD

Manufactured by :
Planet Power Tools Pvt. Ltd.
GIDC Ind. Estate, P. O. Kabilpore,
Navsari - 396424, Gujarat.

Name of Purchaser.....

Address.....

Product.....

CUTTER

Model No

EC 4

Sl. No.....

Date of Purchase

Invoice No.....

Armature No

Dealers Stamp

Signature



EC 4 Planet Power®
110 mm Cutter
INDUSTRIAL

HANDLING INSTRUCTIONS



India's Leading Power Tool Brand

Read, Understand Carefully & Follow These Instructions While Operating Tool.

Manufactured by :
Planet Power Tools Pvt. Ltd.
GIDC Ind. Estate, P. O. Kabilpore,
Navsari - 396424, Gujarat.

Planet Power®
Global Expertise. Local Care

WARRANTY

CONGRATULATIONS; YOU ARE NOW A PROUD MEMBER OF THE PLANET POWER PARIVAR

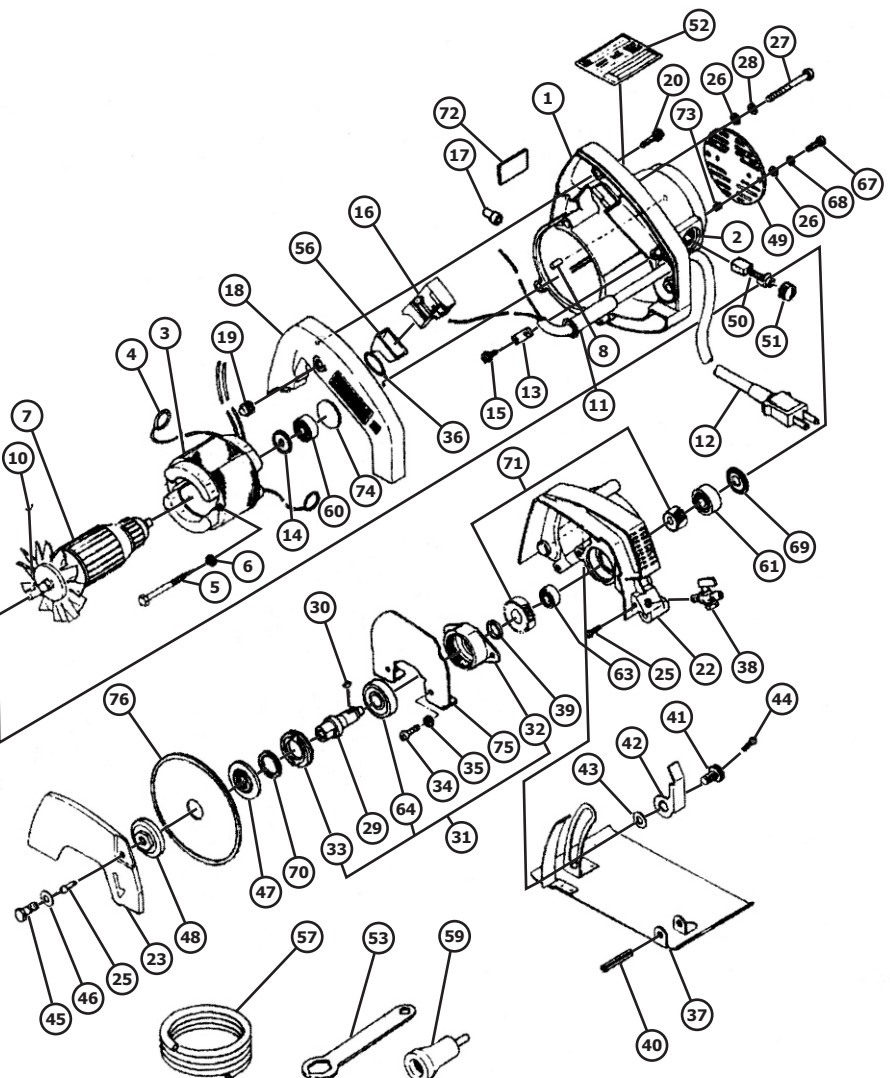
All the tools manufactured by Planet Power Tools Pvt Ltd undergo a series of rigorous inspection procedures ensuring that you only get a world class power tool.

All Products manufactured by Planet Power Tools Pvt. Ltd. are covered by an international warranty valid for six (6) months from the date of purchase. This comprehensive warranty® covers the parts as well any defects arising out of faulty manufacturing of the tool.

®The Warranty **DOES NOT** apply to:

- Components subject to normal wear and tear e.g. Carbon Brushes, Brush holders, plug and cord assembly, drill chucks batteries, flanges etc.
- Unless expressly stated; any and all attachments supplied with the tool.
- Unauthorised repairs, alterations and modifications.
- Damage caused due to dust, slurry, and any foreign objects as well as due to improper use or an accident
- Damage due to voltage fluctuations

EC 4 Planet Power®



Planet Power®
Global Expertise. Local Care

Optional accessories are subject to change without notice

		Diameter (mm)	Hole Diameter (mm)	Thickness (mm)
Blade type	A (Dry)	100	20	1
	B (Wet)	100	20	1

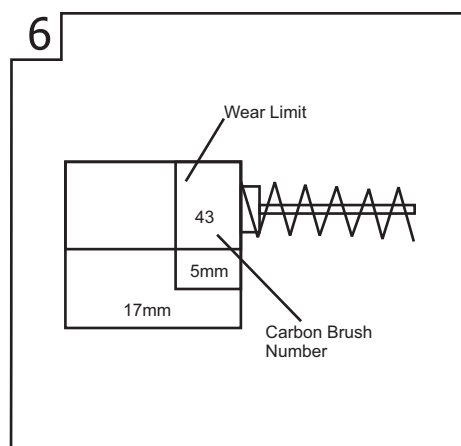
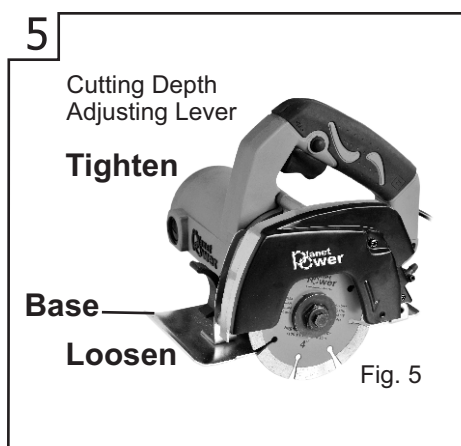
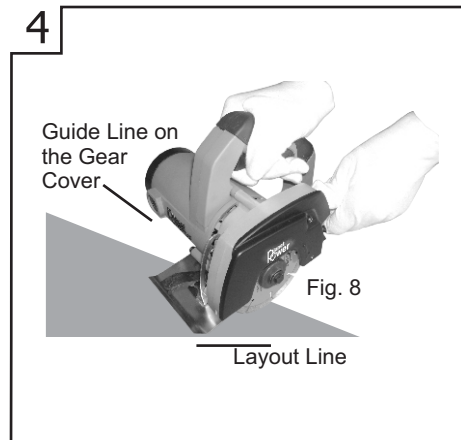
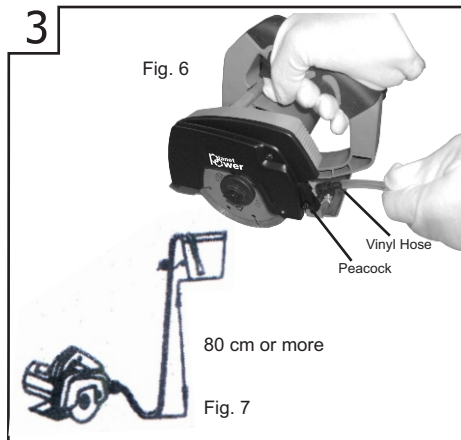
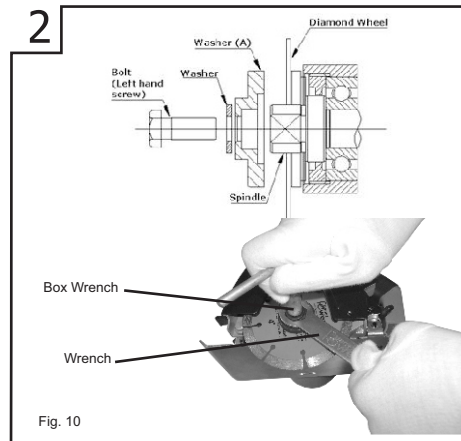
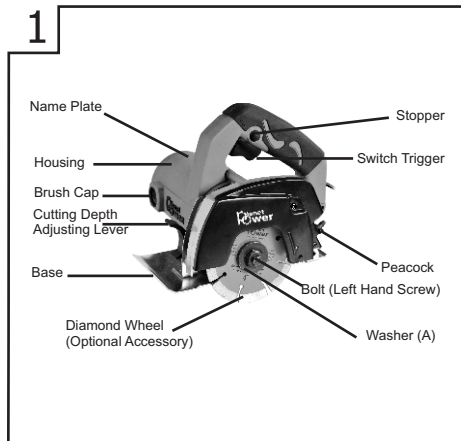
III. CHECK / ENSURE

- a) Power switch is in OFF position, prior to operation.
 - b) The motor winding does not become damaged / wet with oil or water.
 - c) **Regularly inspect all mounting screws and ensure they are properly tightened.**
 - d) Alignment of moving parts.
 - e) Binding of moving parts.
 - f) Breakage of mountings.
 - g) **The carbon brush wear limit.**
1. **Never carry tool by cord.**
 2. Power tools should be stored in cool and dry area.
 3. Inspect tool cords/ extension cords periodically.
 4. **Start cutting operation when full speed has been reached.**
 5. **The maximum cutting depth should be held to 20mm for one cut.**
 6. Pour water on diamond wheel, while cutting or scribing concrete, tile, or stone.
 7. Do not touch movable parts or accessories, unless the Power source has been disconnected.
 8. Follow instructions for lubricating and changing accessories.
 9. **Remove adjusting keys, wrenches before turning it ON.**
 10. Always take care in preventing the power cord from coming in contact with revolving Diamond wheel.
 11. Keep children away, during operation.

PART LIST

ITEM NO.	DESCRIPTION
1	Hosing
2	Brush Holder
3	Stator
4	Brush Terminal
5	Hex Hd Tapping Screw D5x60
6	Washer
7	Armature
8	Bearing Lock
10	Woodruf Key 2.5x8
11	Cord Armor
12	Cord
13	Cord Clip
14	Dust Washer
15	Tapping Screw D4x10
16	Switch
17	Connector
18	Handle Cover
19	Rubber Cover B
20	Tapping Screw D4x20
22	Gear Cover
23	Cutter Cover
25	Machine Screw M4x14
26	Washer
27	Machine Screw M5x50
28	Spring Lock Washer
29	Spindle
30	Woodruf Key 3x10
31	Bearing Holder Assy
32	Bearing Holder
33	Bearing Cap
34	Machine Screw M4x20
35	Spring Lock Washer
36	O Ring
37	Base
38	Peacock

ITEM NO.	DESCRIPTION
39	Distance Collar
40	Roll Pin
41	Left Hand Hex Bolt M8x15
42	Lever
43	Washer
44	Machine Screw M4x8
45	Left Hand Hex Bolt M7x15
46	Washer
47	Washer B
48	Washer A
49	Tail Cover
50	Carbon Brush
51	Brush Cap
52	Name Plate
53	Wrench
56	Rubber Cover A
57	Hose
59	Rubber Connector
60	Ball Bearing (608 zzc2)
61	Ball Bearing (629 wc2)
63	Ball Bearing (626 zzc2)
64	Ball Bearing (6201 wc2)
67	Machine Screw M5x14
68	Spring Lock Washer
69	Dust Seal B
70	X Ring
71	Gear & Pinion Assy
72	Seal Packing
73	Hex Sc Hd Set Screw M5x6
74	Bearing Seal
75	Cover
76	Diamond Wheel



Technical Data

Power Input	1300 W	
No-Load Speed	12000 rpm	
Voltage	230V~	
Max. Cutting Depth	34 mm	(Wheel dia. 110mm)
	41.5 mm	(Wheel dia. 125 mm)
	29 mm	(Wheel dia. 100)
Diamond Wheel	110 mm external dia. X 1.0mm thickness x 20mm inter dia.	
Weight	2.8Kg	

APPLICATIONS

Cutting and scribbling various types of Tiles, Stones & Concrete.

GENERAL OPERATIONAL PRECAUTIONS

I. DON'T USE / EXPOSE

- In presence of flammable liquids or gases.
- For cutting of metallic materials.
- To the rain.
- In damp or wet locations.
- If switch does not turn it ON and OFF.
- Cutting along curves.
- Diamond wheel such as crack, broken or bent.
- Solvents such as Thinner, Gasoline, Benzene, Alcohol, ammonia etc. for wiping / cleaning the plastic parts or accessories.

II. USE

- Proper voltage power source, according to the specification.
- Extension cords which are intended for outdoors, during outdoor use.
- Clamps or vise to hold work.
- Safety glasses.
- Protective hair covering.
- Wear rubber hand gloves.
- Wear Non – Skid rubber footwear.
- Only Diamond wheel cutter (Wet / dry type)

STANDARD ACCESSORIES

- | | |
|---------------------|---|
| 1. Wrench | 2 |
| 2. Rubber Connector | 1 |
| 3. Vinyl Hose | 1 |

Standard accessories are subject to change without notice.

OPTIONAL ACCESSORIES (sold separately)

Diamond wheel

